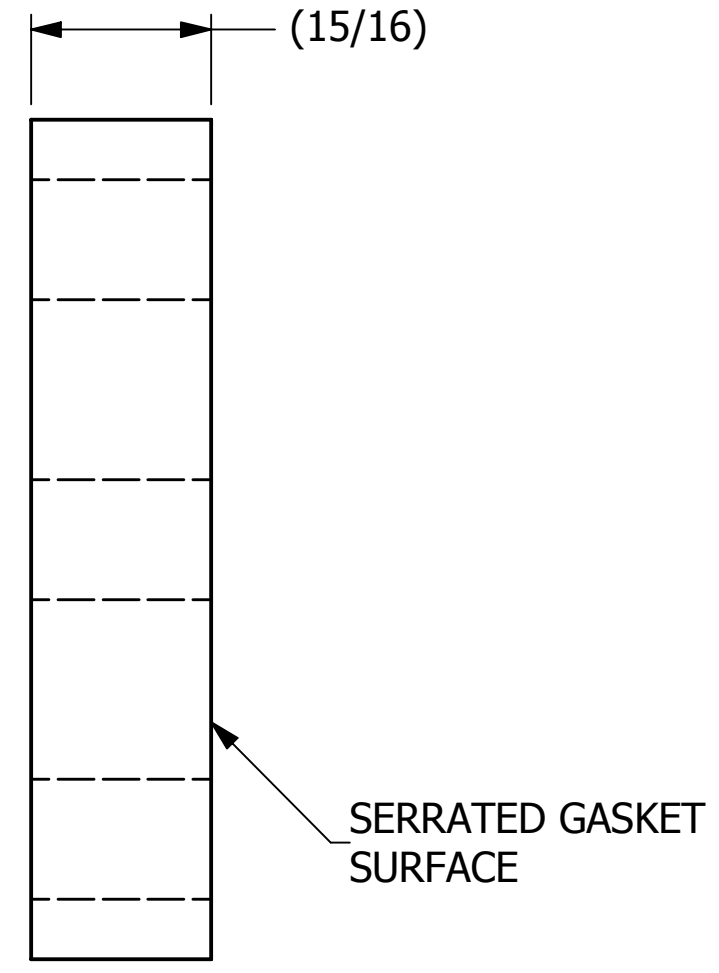
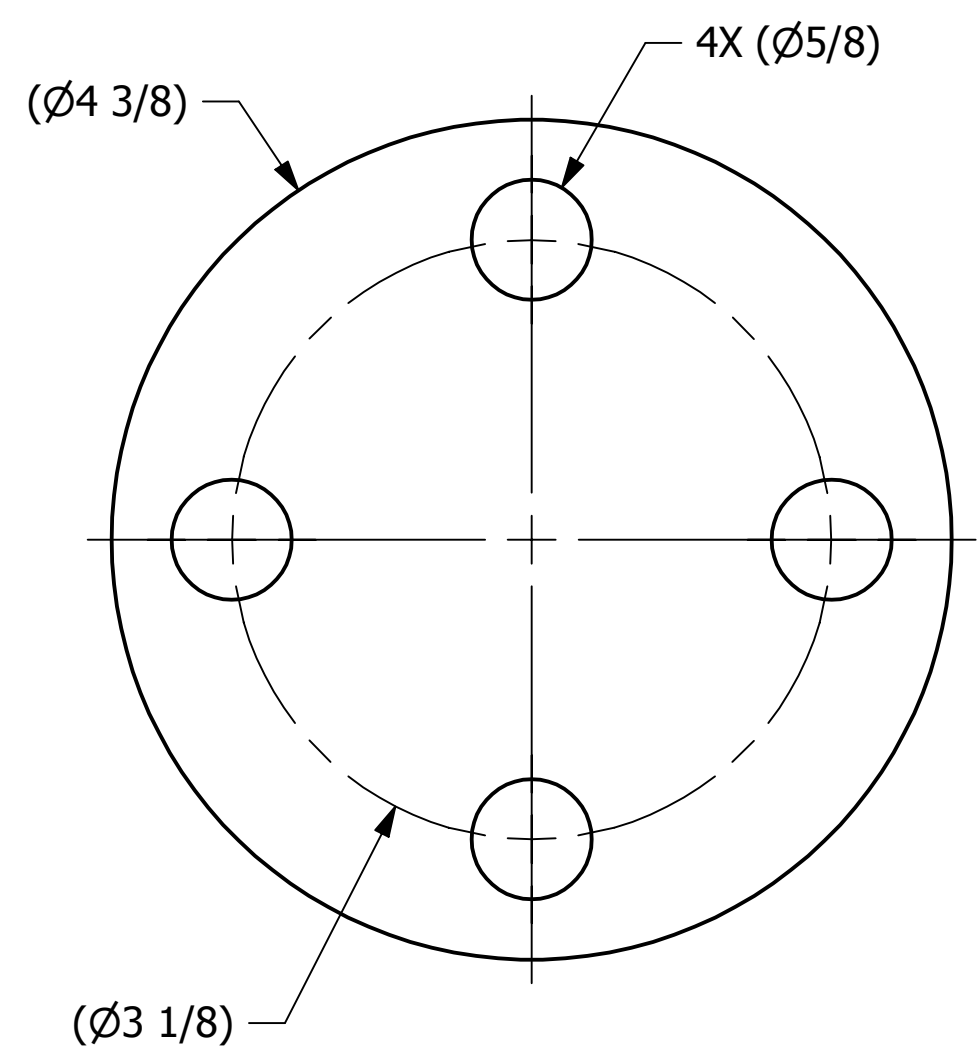


SALES DRAWING

SALES DRAWING



B	JG	11-17-14	UPDATED TITLEBLOCK, NOTES
A	PJG	4-13-10	NEW PART ADDED TO SYSTEM
REV	BY	DATE	DESCRIPTION

<small>UNLESS OTHERWISE SPECIFIED DIMENSIONAL TOLERANCES</small> FRACTIONAL: ±1/16 X.XX: ±.03 X.XXX: ±.015 ANGULAR: ±1° <small>DEBURR ALL SHARP EDGES. ALL MACHINED SURFACES TO HAVE A 125 RMS FINISH UNLESS NOTED OTHERWISE.</small>	DRAWN BY:	WRB
	CHECKED BY:	PJG
	PROTOTYPE BY:	WRB
	PROTOTYPE DATE:	9/9/2008
	APPROVED FOR PRODUCTION BY:	PJG
THIRD ANGLE PROJECTION	PRODUCTION DATE:	4/13/2010

<b>SALCO PRODUCTS, INC.</b>		
PART NAME: <b>BLIND FLANGE 1" 150 LB</b>		
MATERIAL: <b>SALCO PE</b>		
PROJECT #: <b>WAG0615</b>	SHEET #: <b>1 OF 1</b>	SCALE: <b>1:1</b>
DRAWING #: <b>B25952</b>	PART #: <b>HS1150BFP</b>	

THIS PRINT, PROPERTY OF SALCO PRODUCTS INC., CONTAINS PROPRIETARY INFORMATION AND MUST NOT BE COPIED, REPRODUCED, OR USED DETRIMENTALLY TO OUR INTEREST.